

· vibio.land ·

Nueva vida, Km. Cero



Empresa
B
Certificada

**DISTRITO
NATURAL**
COVIVIENDA ECOLÓGICA



Casa Mollison 115 m²

Bill Mollison (Biólogo)
“Debemos trabajar con, y no en contra de la naturaleza”.

planta baja: diáfana



planta baja: 1 dormitorio ☀



NOTA: DOCUMENTACIÓN ORIENTATIVA SIN CARÁCTER CONTRACTUAL Y MERAMENTE ILUSTRATIVA SUJETA A MODIFICACIONES NECESARIAS POR EXIGENCIAS DE ORDEN TÉCNICO, JURÍDICO O COMERCIAL DE LA DIRECCIÓN FACULTATIVA O LA AUTORIDAD COMPETENTE. LA JARDINERÍA, EL AMUEBLAMIENTO ES FICTICIO TENIENDO VALIDEZ ÚNICAMENTE A EFECTOS DECORATIVOS. LAS SUPERFICIES SON APROXIMADAS Y PODRÍAN SUFRIR VARIACIONES POR NECESIDADES TÉCNICAS DURANTE EL PROYECTO. LA DISTRIBUCIÓN DEL MOBILIARIO DE COCINA ES ORIENTATIVO.

Casa Mollison

2-4 dormitorios

115 m²

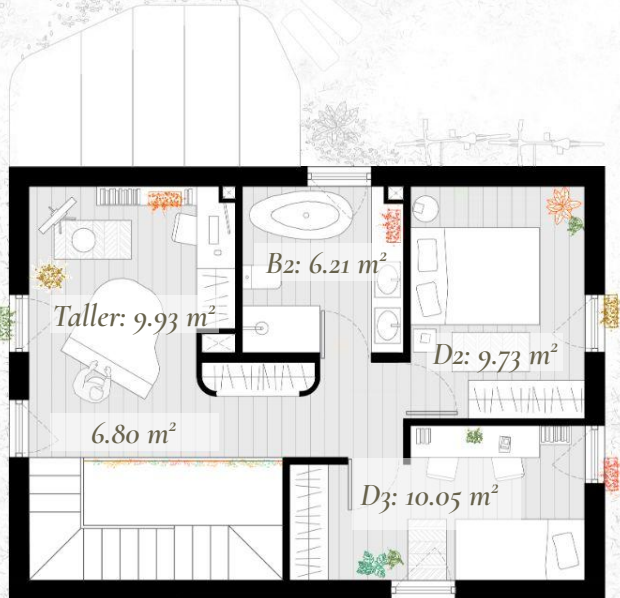



☀ Opción con coste

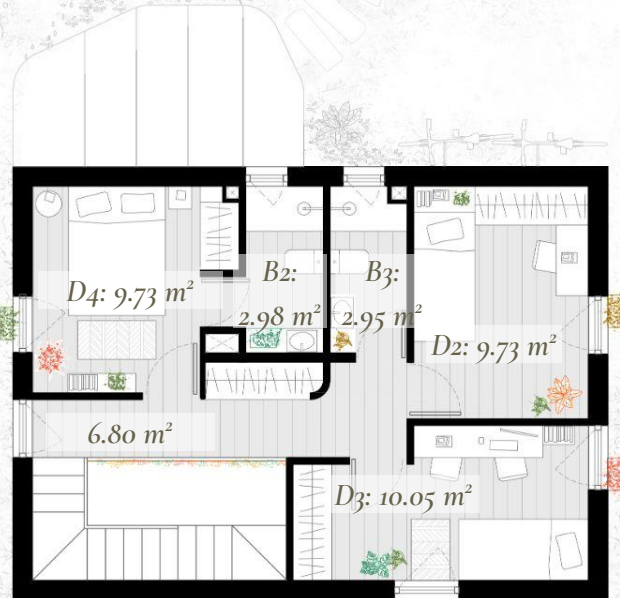
TOTAL útil: 95,38 m²

TOTAL cons: 115,81 m²

planta primera: 2 dormitorios + taller



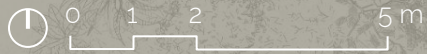
planta primera: 3 dormitorios 



NOTA: DOCUMENTACIÓN ORIENTATIVA SIN CARÁCTER CONTRACTUAL Y MERAMENTE ILUSTRATIVA SUJETA A MODIFICACIONES NECESARIAS POR EXIGENCIAS DE ORDEN TÉCNICO, JURÍDICO O COMERCIAL DE LA DIRECCIÓN FACULTATIVA O LA AUTORIDAD COMPETENTE. LA JARDINERÍA, EL AMUEBLAMIENTO ES FICTICIO TENIENDO VALIDEZ ÚNICAMENTE A EFECTOS DECORATIVOS. LAS SUPERFICIES SON APROXIMADAS Y PODRÍAN SUFRIR VARIACIONES POR NECESIDADES TÉCNICAS DURANTE EL PROYECTO. LA DISTRIBUCIÓN DEL MOBILIARIO DE COCINA ES ORIENTATIVO.

Casa Mollison
2-4 dormitorios

115 m²



 Opción con coste

TOTAL útil: 95.38 m²
TOTAL cons: 115.81 m²

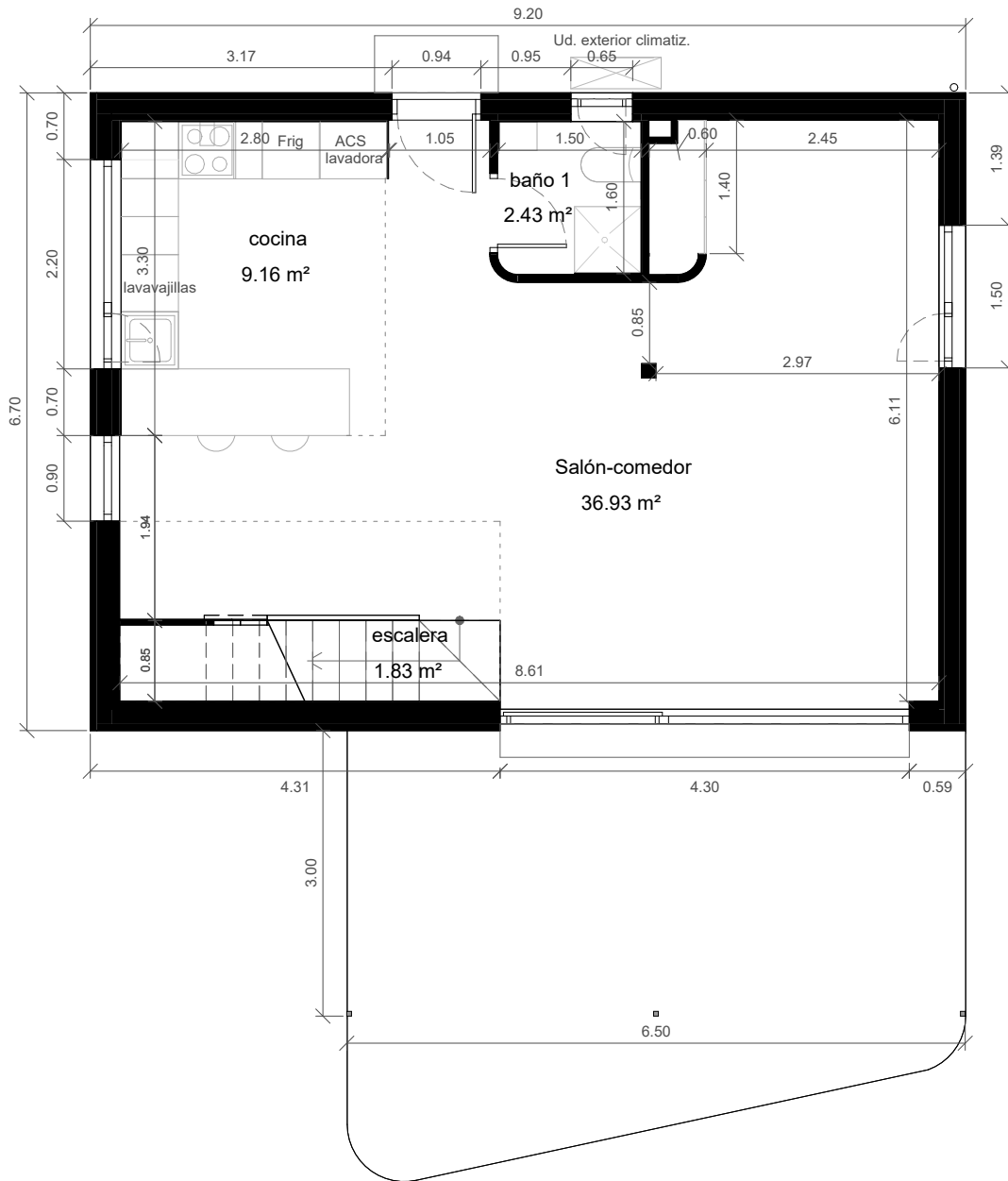


Casa Mollison 115 m²
2-4 dormitorios

¿Te imaginas viviendo en plena naturaleza?

Diseñamos y promovemos *viviendas ecológicas* que mejoran la salud y la convivencia para crear un *impacto positivo* en el entorno.


**DISTRITO
NATURAL**
COVIVIENDA ECOLÓGICA



Casa Mollison

Pl. baja: diáfana

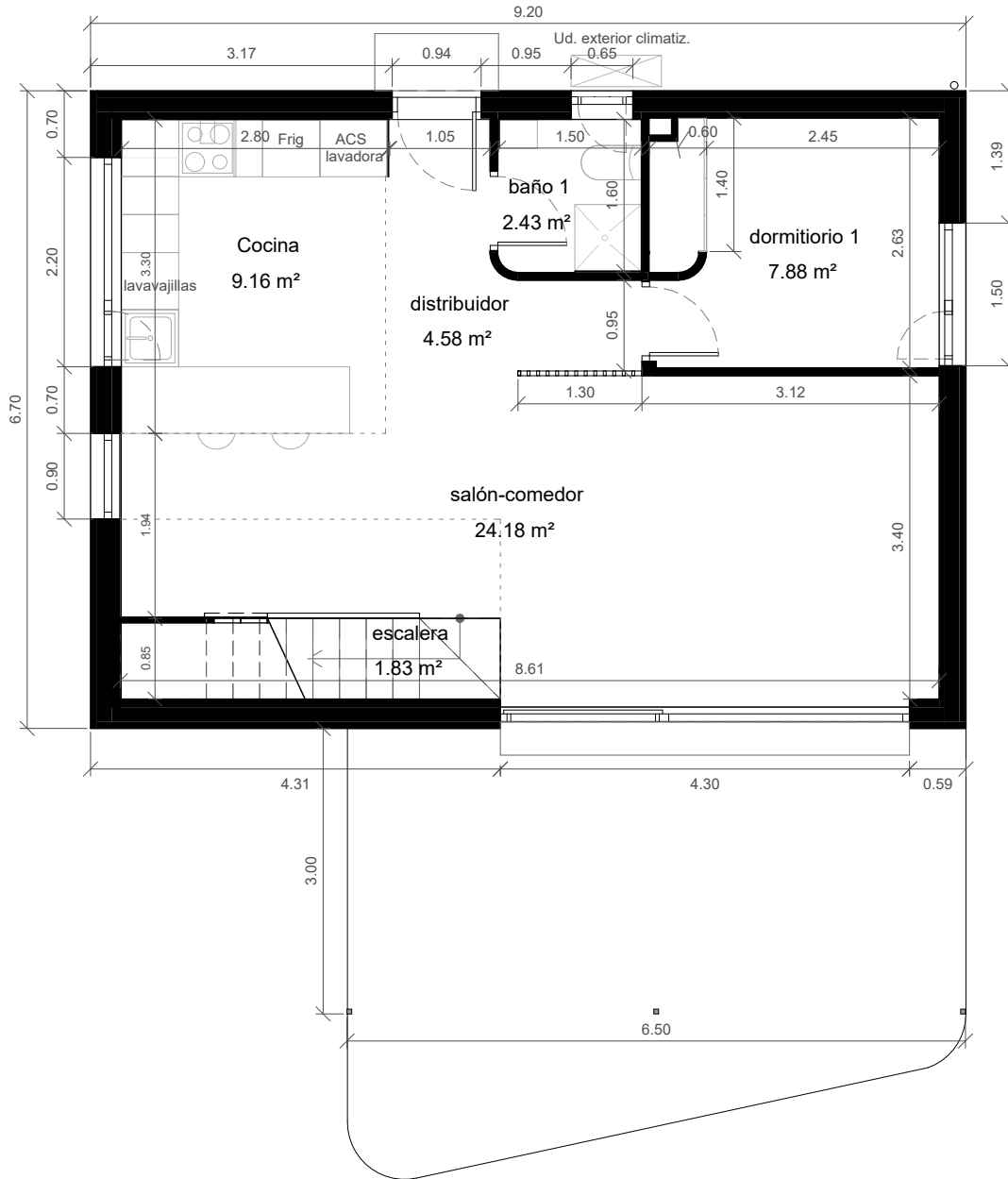
115 m²



Sup. útil PB: 50.36 m²

TOTAL útil: 95.38 m²

TOTAL cons: 115.81 m²



Casa Mollison

Pl. baja: 1 dormitorio

115 m²



Sup. útil PB: 50.06 m²

TOTAL útil: 94.59 m²

TOTAL cons: 115.81 m²



Casa Mollison

Pl. 1^a: 2 dormitorios

115 m²



Sup. útil PB: 45.02 m²

TOTAL útil: 95.38 m²

TOTAL cons: 115.81 m²



Casa Mollison

Pl. 1ª: 3 dormitorios

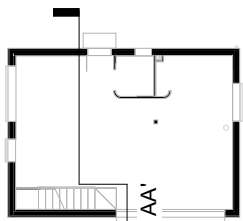
115 m²



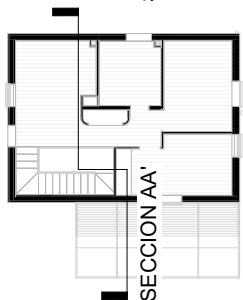
Sup. útil PB: 44.54 m²

TOTAL útil: 94.59 m²

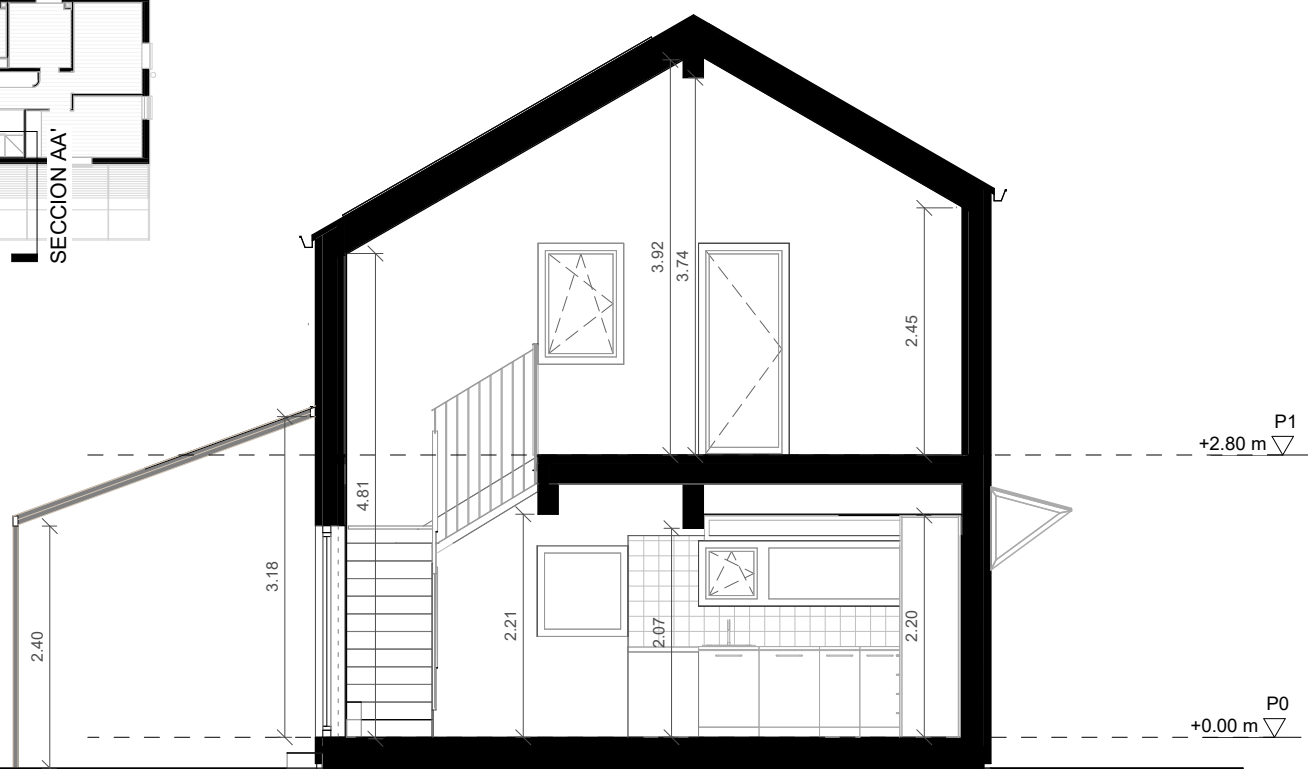
TOTAL cons: 115.81 m²



SECCION AA'



SECCION AA'

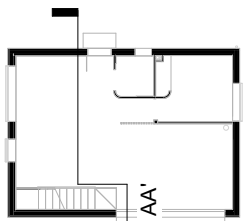


Casa Mollison

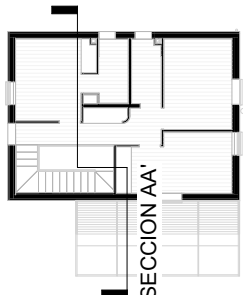
2 dormitorios
Sección

115 m²

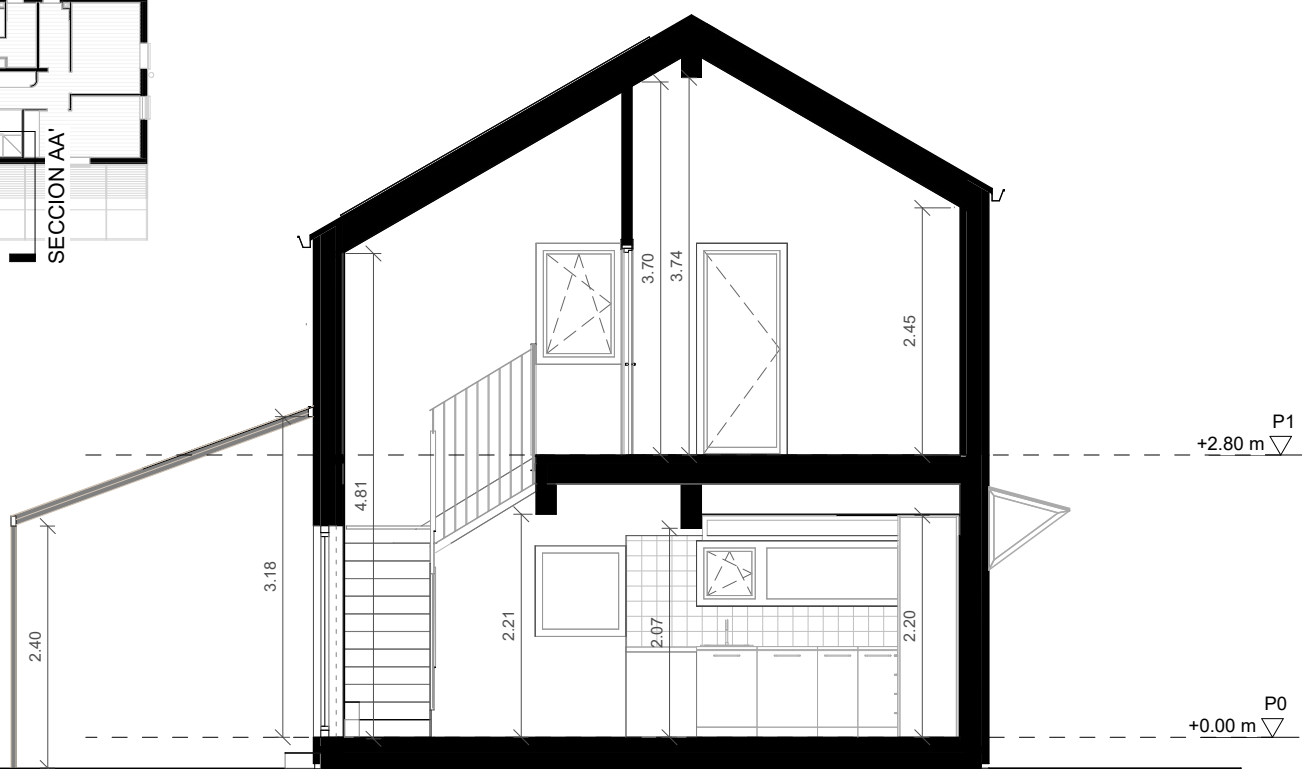




SECCION AA'



SECCION AA'



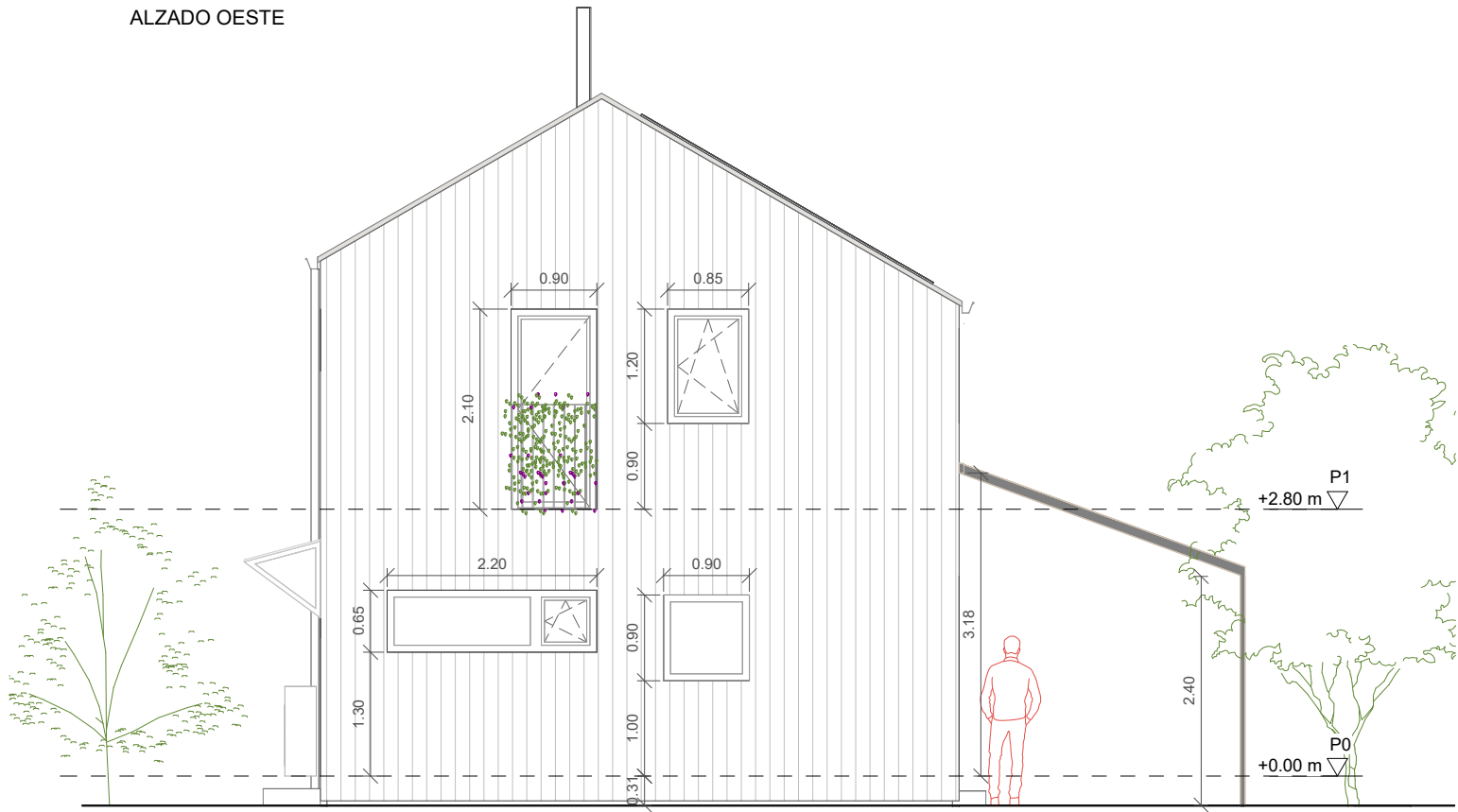
Casa Mollison

4 dormitorios
Sección

115 m²



ALZADO OESTE



ALZADO SUR



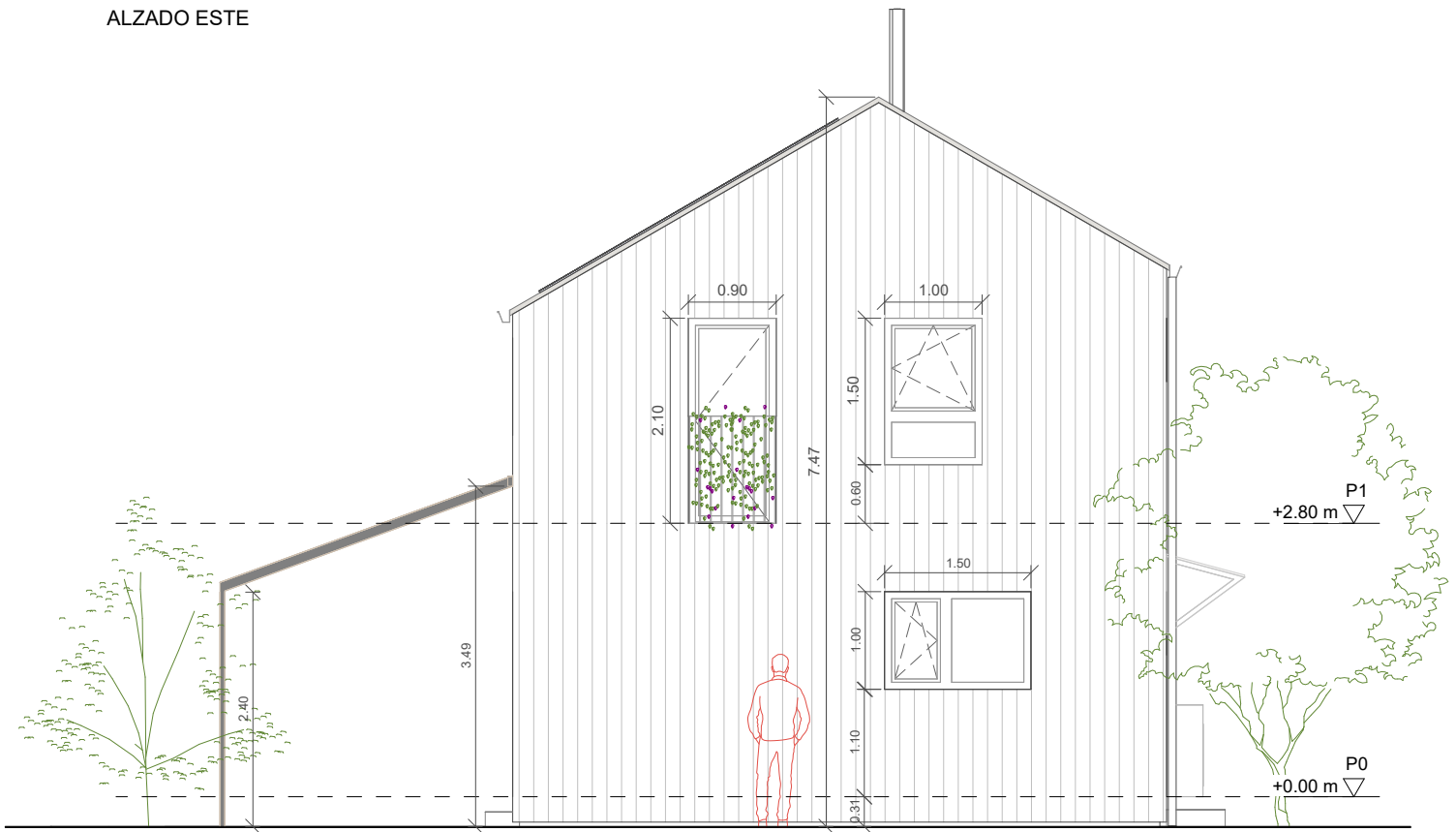
Casa Mollison

2-4 dormitorios
Alzados

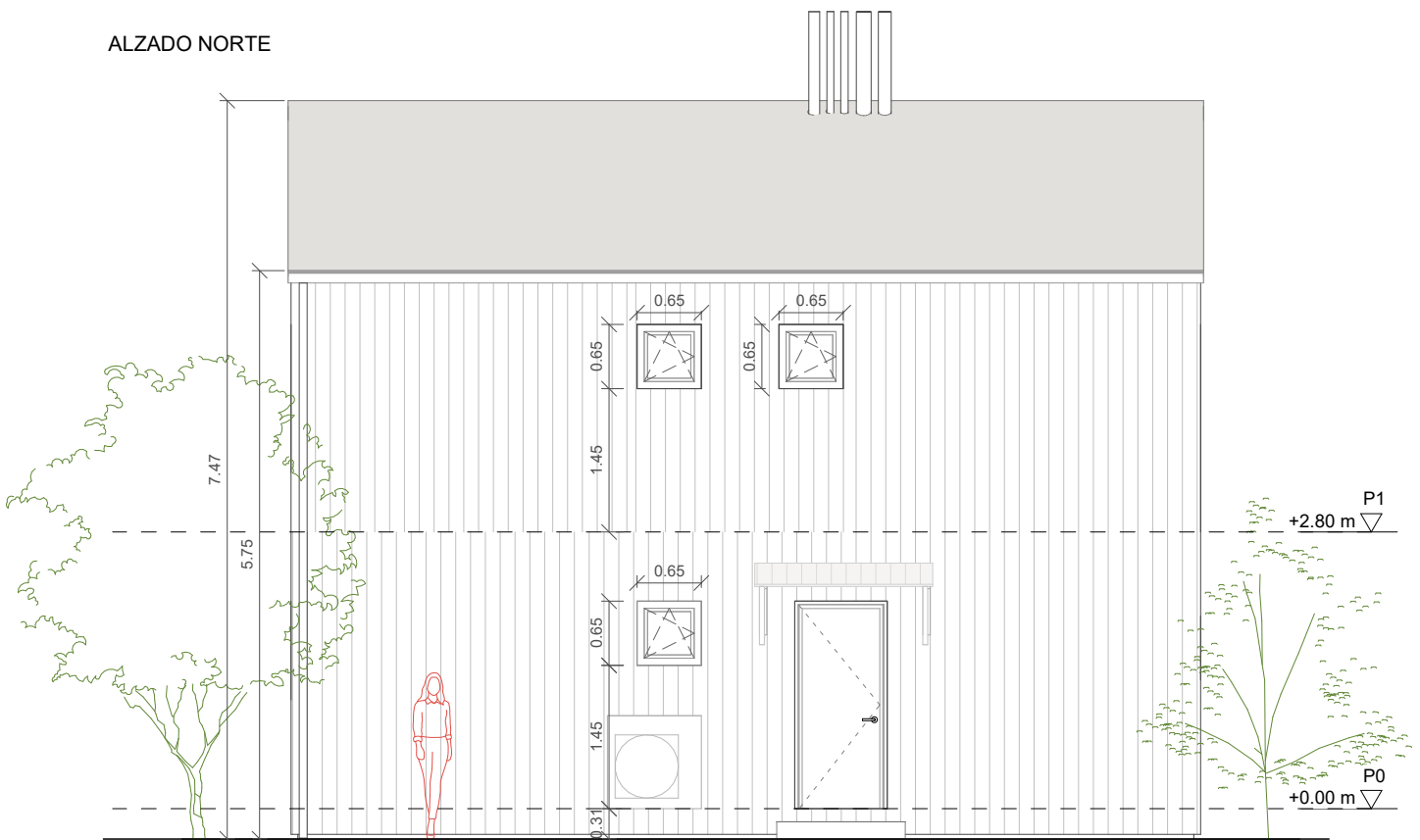
115 m²



ALZADO ESTE



ALZADO NORTE

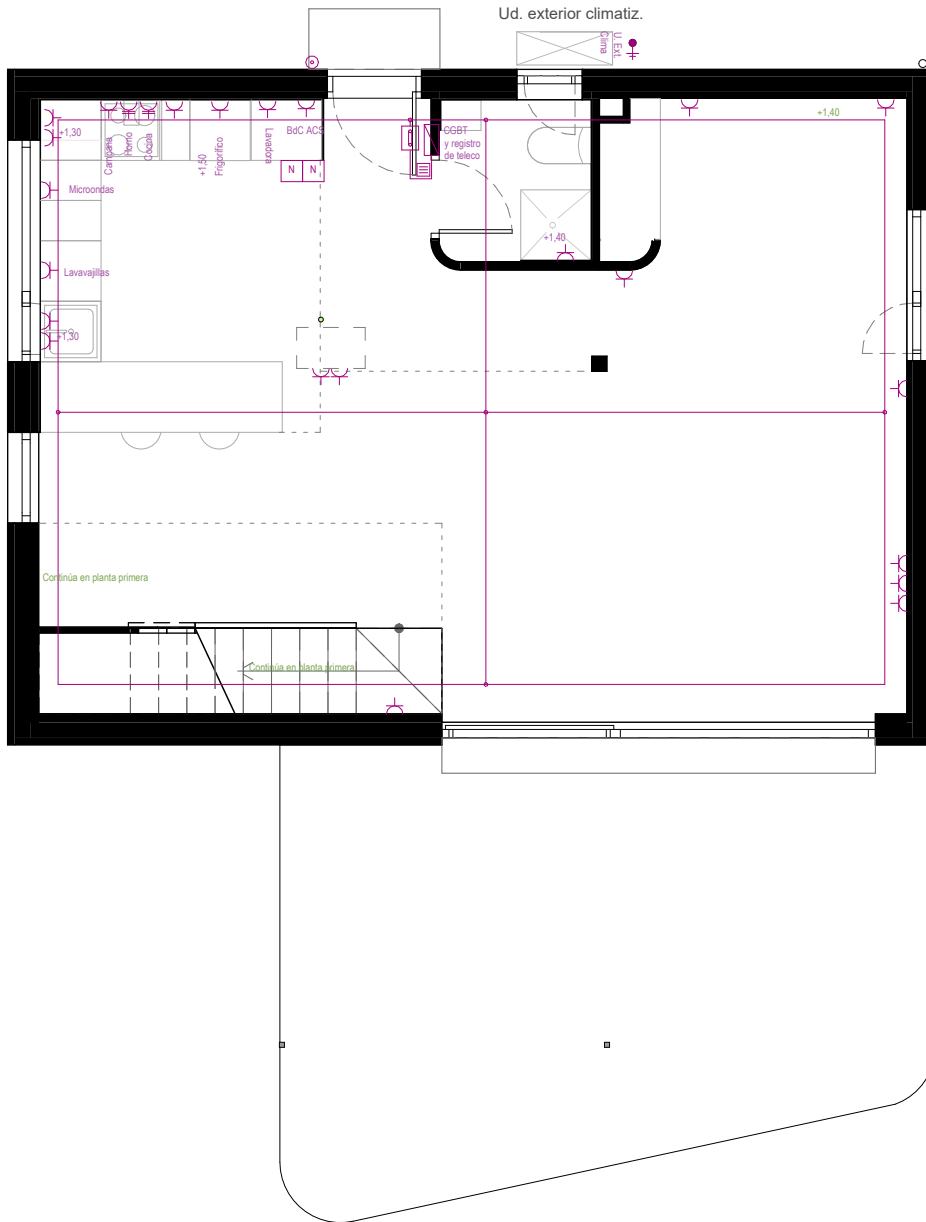


Casa Mollison

2-4 dormitorios
Alzados

115 m²



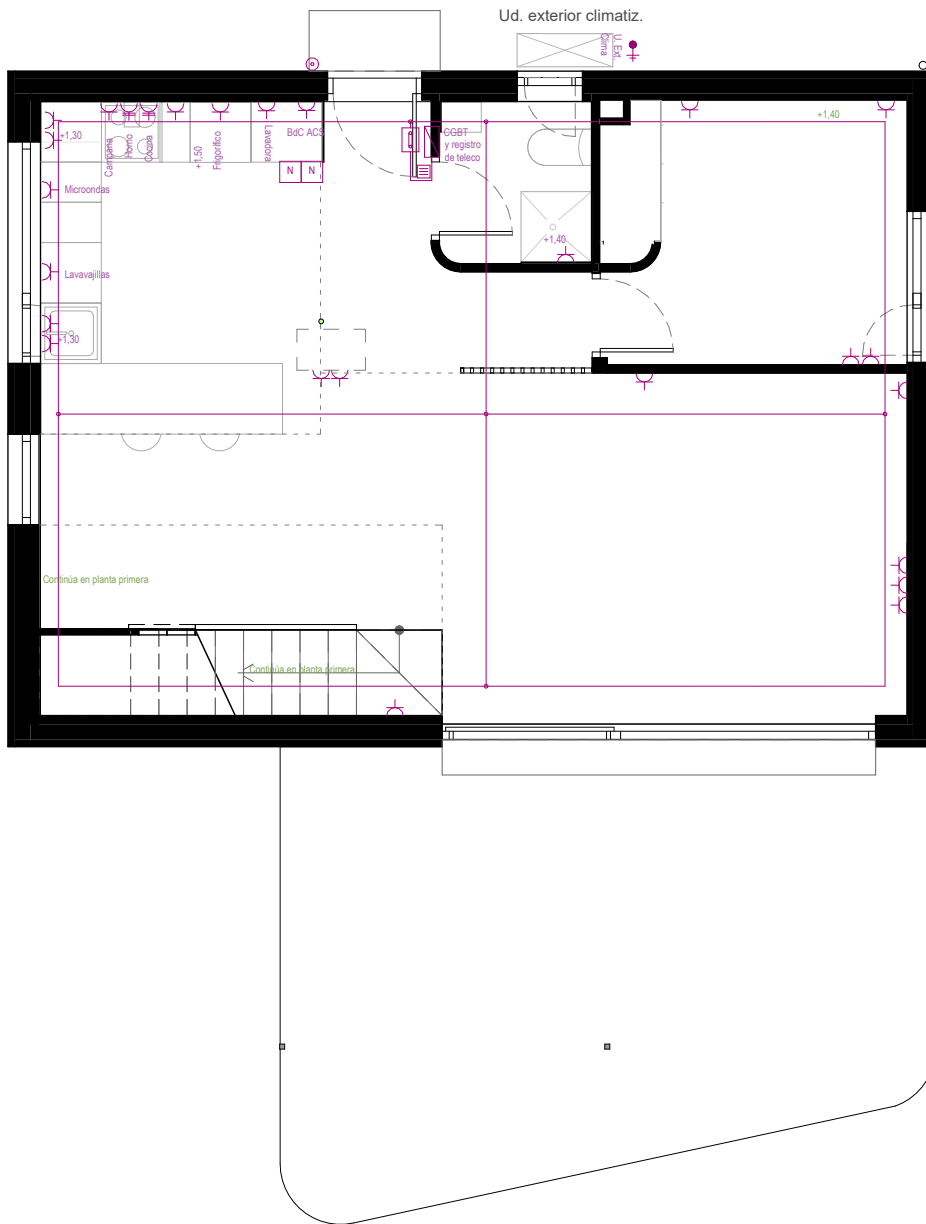


Casa Mollison

Pl. baja: diáfana
Electricidad

115 m²



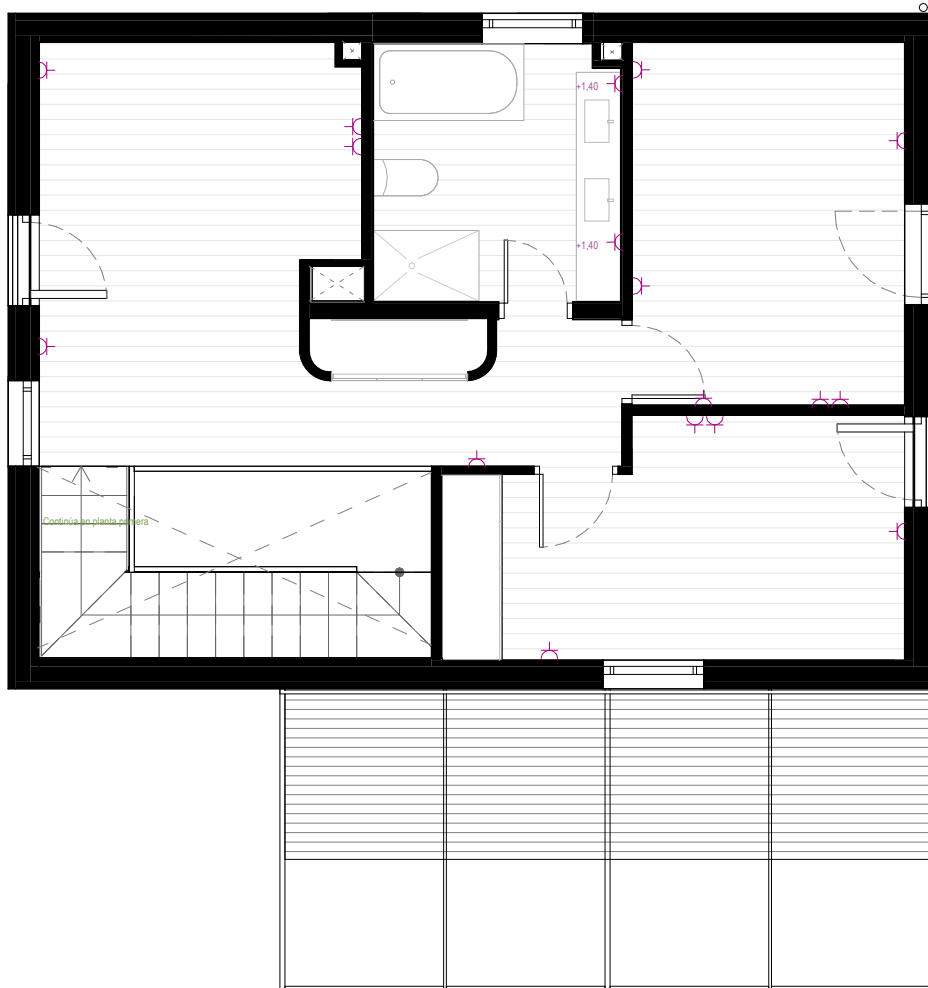


Casa Mollison

Pl. baja: 1 dormitorio
Electricidad

115 m²



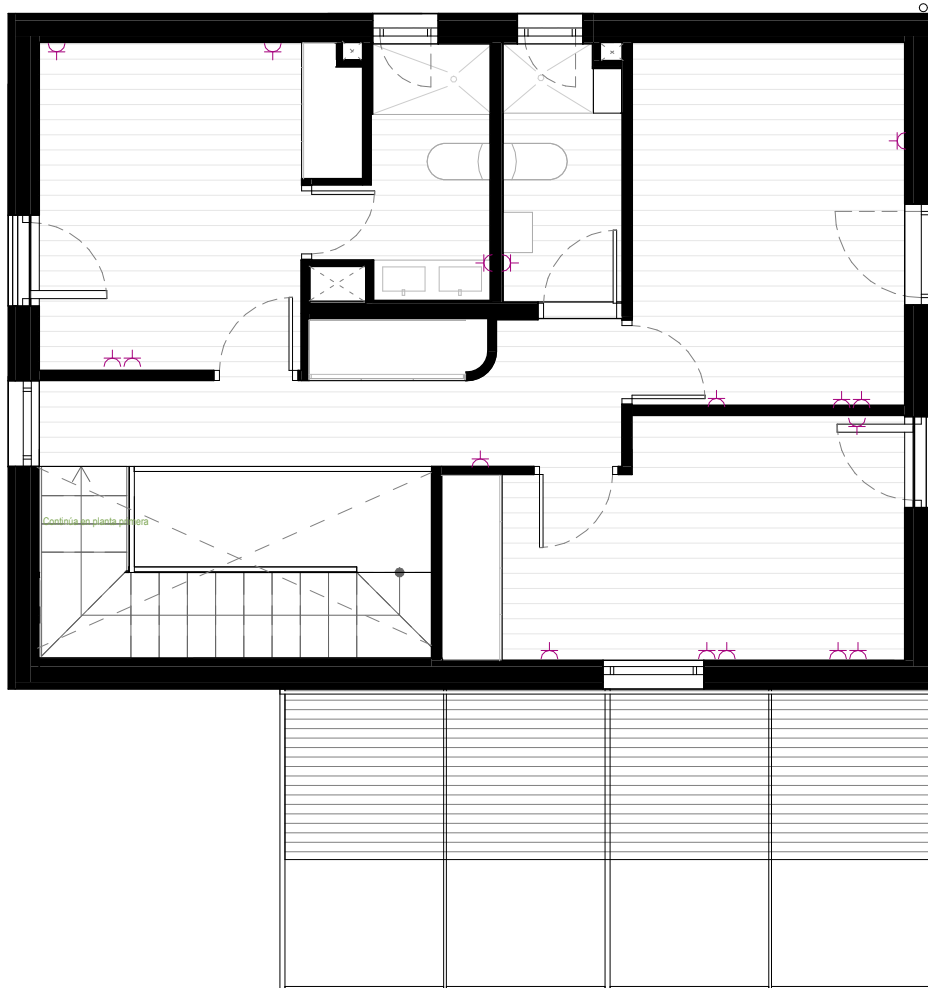


Casa Mollison

Pl. 1^a: 2 dormitorios
Electricidad

115 m²



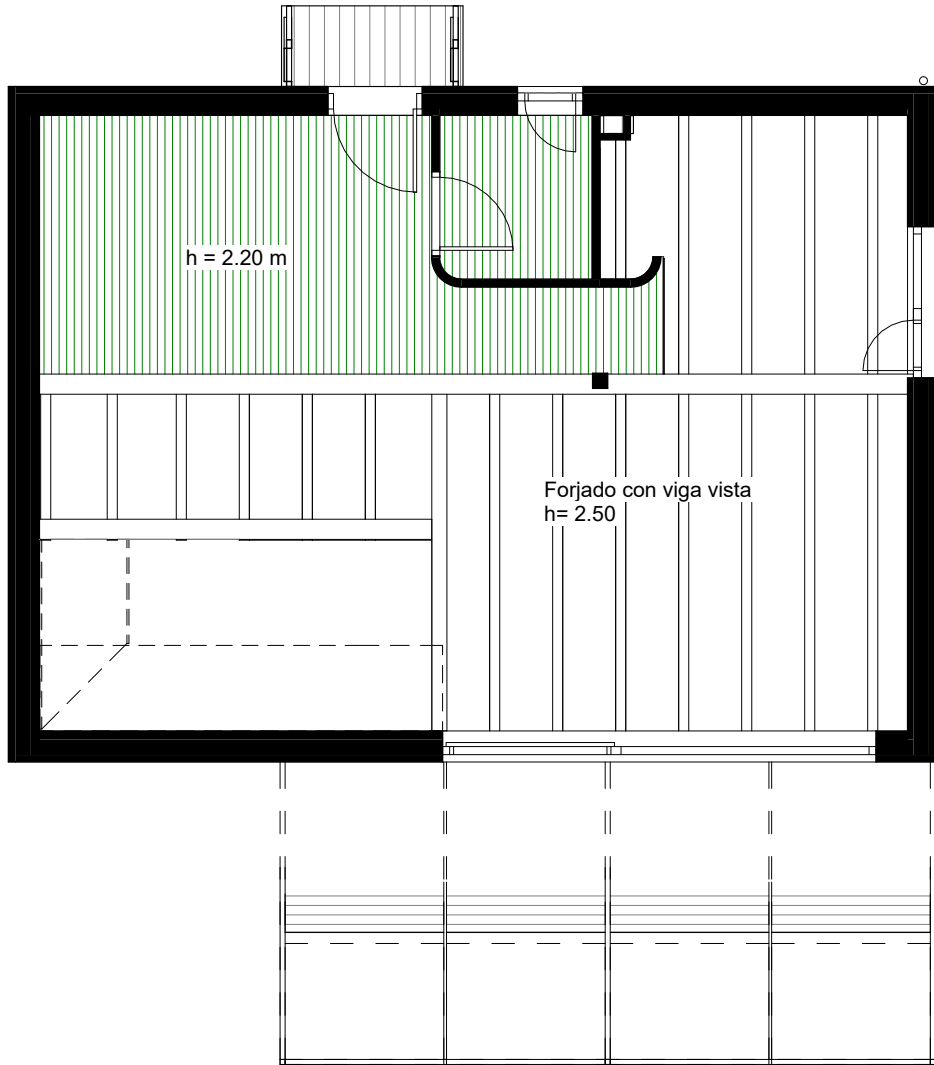


Casa Mollison




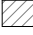

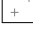




Pl. 1ª: 3 dormitorios
Electricidad

115 m²





LEYENDA DE FALSOS TECHOS

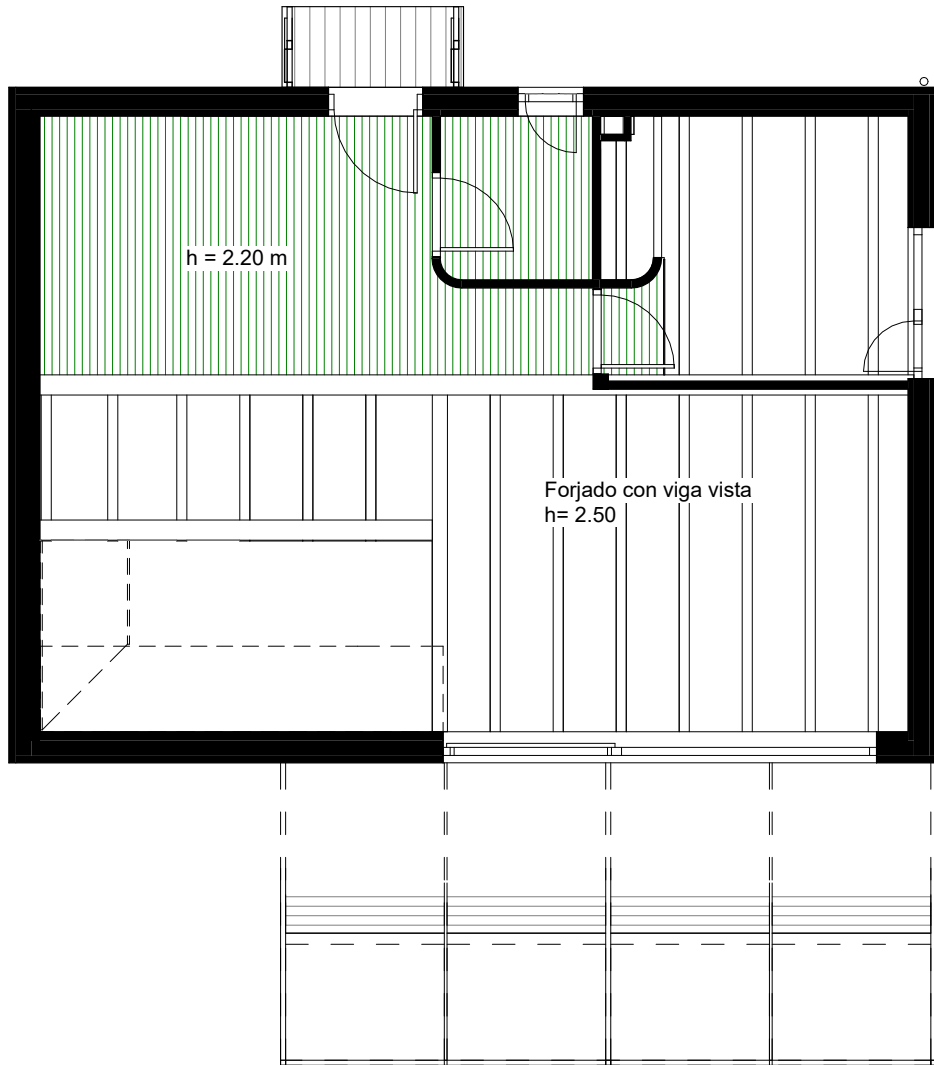
TECHO PYL - A	TECHO PYL - H1	TECHO MADERA DE PINO
P0 (+0.00)	P0 (+0.00)	P1 (+2.80)
 h = 2.20 m	 h = 2.20 m	 Techo inclinado 30°
 h = 2.50 m	P1 (+2.80)	
P1 (+2.80)	 h = 2.10 m	
 h = 2.40 m	 h = 2.80 m	
 h = 2.80 m	 Techo inclinado 30°	
 Techo inclinado 30°		

Casa Mollison






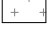



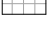
*Pl. baja: diáfana
Falsos techos*

115 m²





LEYENDA DE FALSOS TECHOS

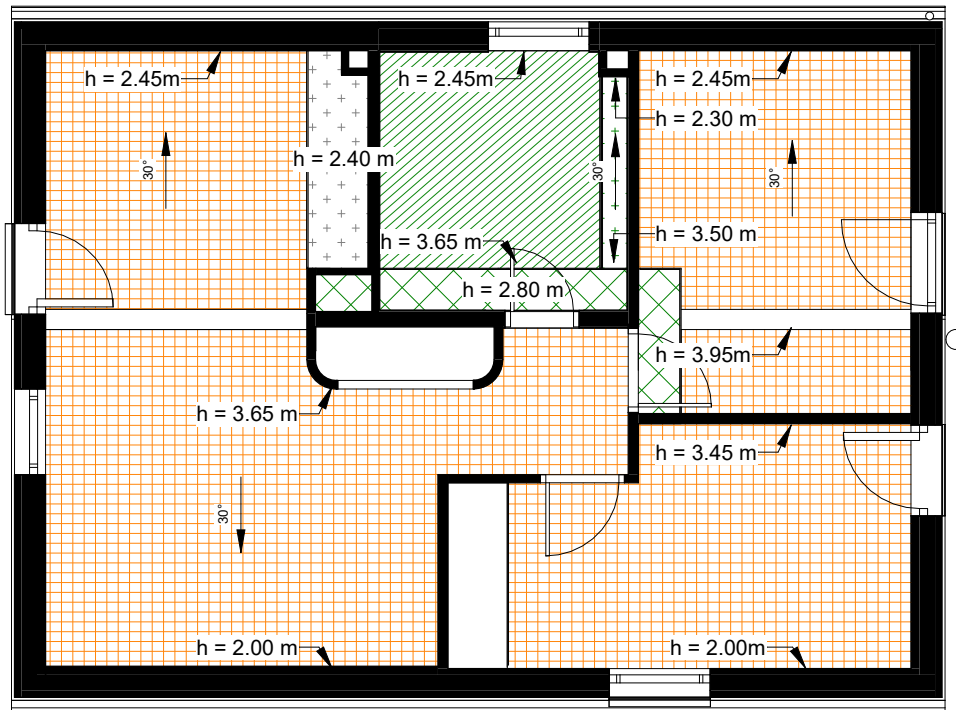
TECHO PYL - A	TECHO PYL - H1	TECHO MADERA DE PINO
P0 (+0.00)	P0 (+0.00)	P1 (+2.80)
 h = 2.20 m	 h = 2.20 m	 Techo inclinado 30°
 h = 2.50 m	P1 (+2.80)	
P1 (+2.80)	 h = 2.10 m	
 h = 2.40 m	 h = 2.80 m	
 h = 2.80 m	 Techo inclinado 30°	
 Techo inclinado 30°		

Casa Mollison





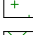




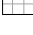
Pl. baja: 1 dormitorio
Falsos techos

115 m²





LEYENDA DE FALSOS TECHOS

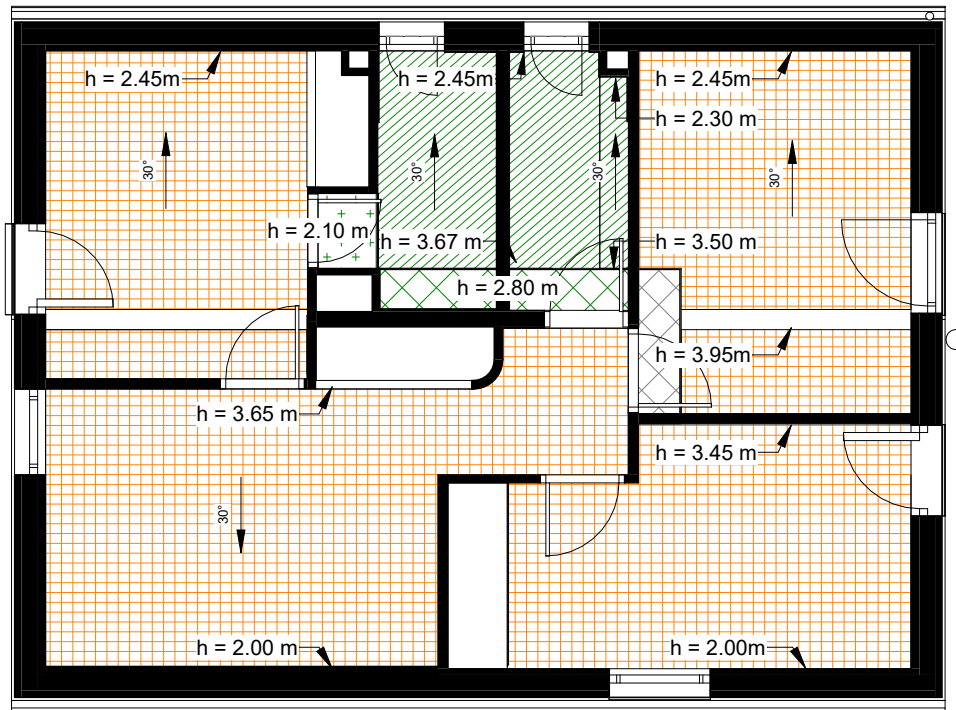
TECHO PYL - A	TECHO PYL - H1	TECHO MADERA DE PINO
P0 (+0.00)	P0 (+0.00)	P1 (+2.80)
 h = 2.20 m	 h = 2.20 m	 Techo inclinado 30°
 h = 2.50 m	P1 (+2.80)	
P1 (+2.80)	 h = 2.10 m	
 h = 2.40 m	 h = 2.80 m	
 h = 2.80 m	 Techo inclinado 30°	
 Techo inclinado 30°		

Casa Mollison










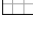
Pl. 1ª: 2 dormitorios
Falsos techos

115 m²





LEYENDA DE FALSOS TECHOS

TECHO PYL - A	TECHO PYL - H1	TECHO MADERA DE PINO
P0 (+0.00)	P0 (+0.00)	P1 (+2.80)
 h = 2.20 m	 h = 2.20 m	 Techo inclinado 30°
 h = 2.50 m	P1 (+2.80)	
P1 (+2.80)	 h = 2.10 m	
 h = 2.40 m	 h = 2.80 m	
 h = 2.80 m	 Techo inclinado 30°	
 Techo inclinado 30°		

Casa Mollison

Pl. 1ª: 3 dormitorios
Falsos techos

115 m²

